

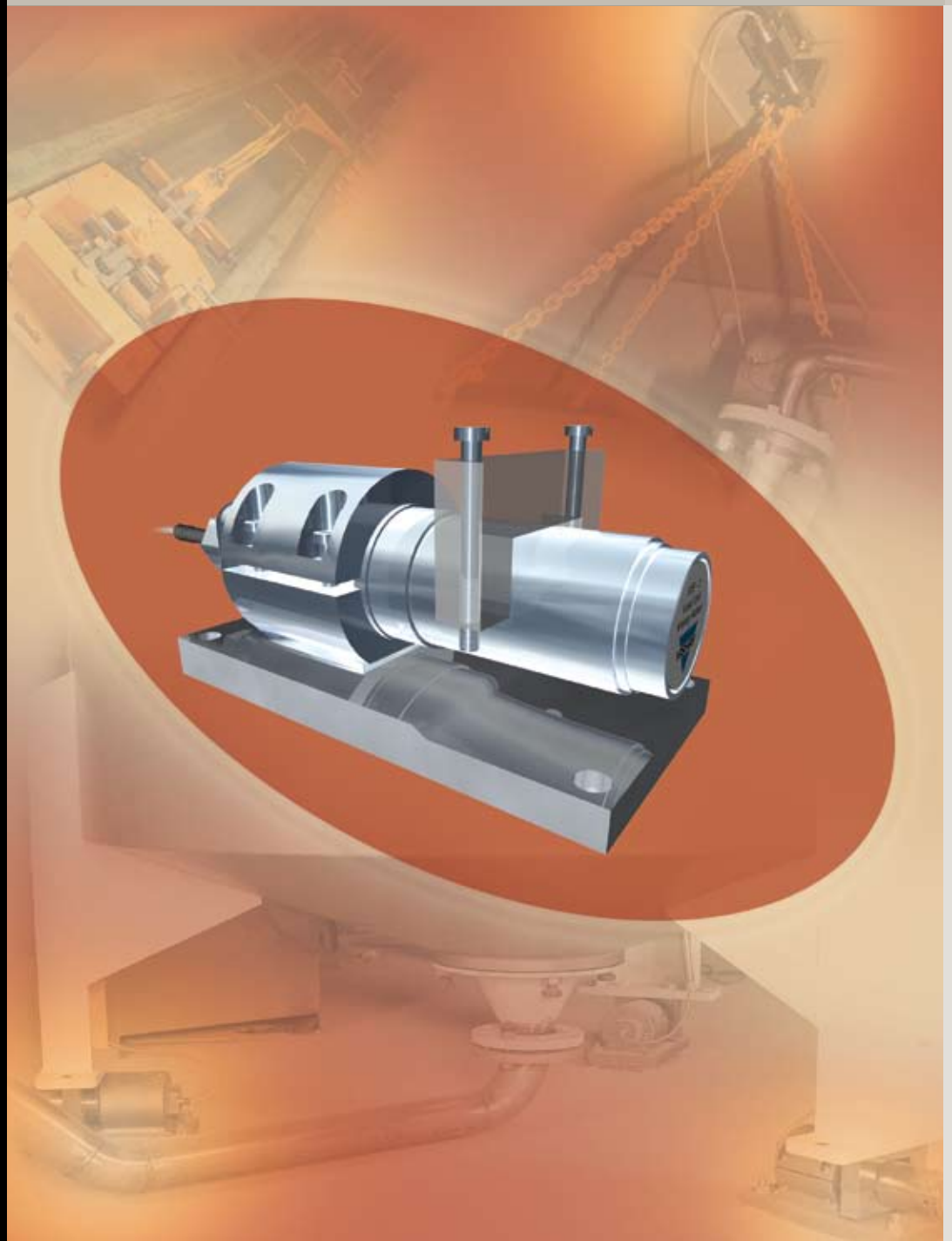


VISHAY INTERTECHNOLOGY, INC.

VISHAY SYSTEMS
WEIGHING AND FORCE MEASUREMENT SOLUTIONS

THE KIS PRINCIPLE

Vishay Nobel

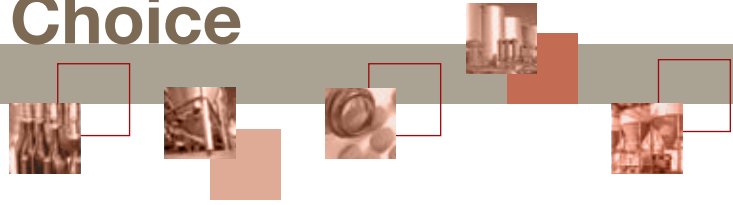


CONTROL SYSTEMS

MARKET SOLUTIONS



The Logical Choice

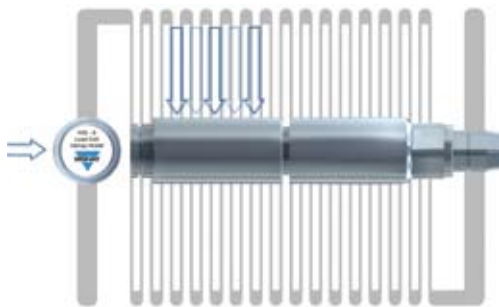
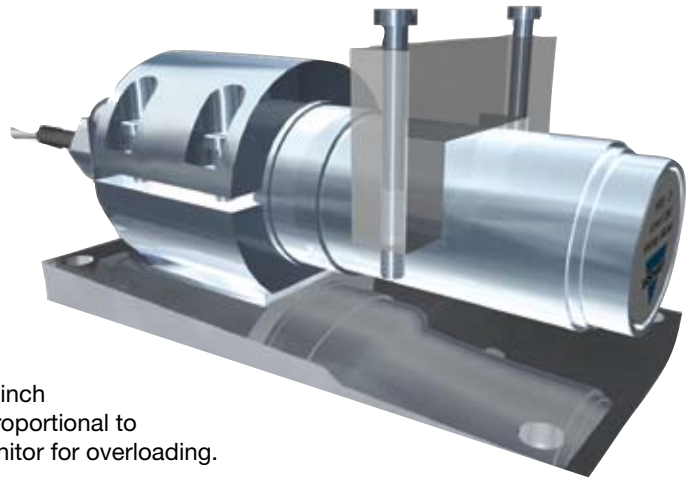


The KIS Load Cell

Simple To Install

Installation is very simple for a standard tank weighing application with KIS load cells. A load cell with a standard bracket for anchoring in the foundation, and a yoke for application of the load are placed under each support leg. No stay rods or other mechanical arrangements are required. Because the load cell arrangement has a low profile, the overall height of the tank is hardly affected.

In more complex applications, where the load or force is not so well-defined, the cylindrical shape of the KIS beam can be used to great advantage. For instance, a KIS can be used to replace a deflecting shaft in a ship's winch gearbox, thus enabling the measurement of load that is proportional to the total load on the winch. This is an effective way to monitor for overloading.

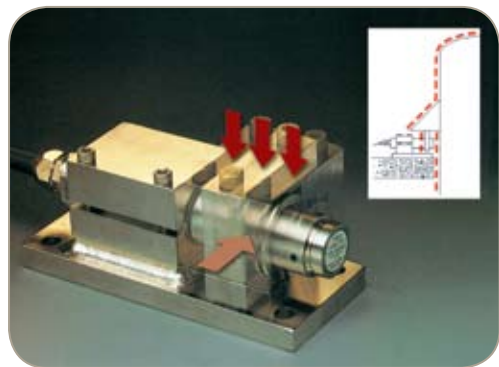


Movable Load Point

With KIS load cells, the load point can be moved along the shaft without any detrimental effect on its high accuracy. This feature eliminates problems with load offsets due to thermal effects, or to the effects of vibration from agitators, for instance, when weighing reactors.

Withstand Very High Lateral Forces

When compared to other load cells, KIS load cells retain high accuracy even under the influence of lateral forces. This feature eliminates the necessity of stay-rod arrangements and makes them less costly to install.



Accurate And Rugged

KIS load cells are available with accuracy better than 0.02% of full-load capacity. Repeatability is better than 0.01%.

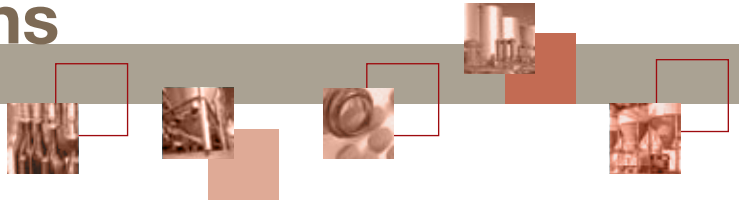
Most KIS load cells are constructed of stainless steel, and some models are yellow chromated steel. All KIS load cells are splash proof and meet IP67 requirements. A detailed data and calibration sheet is provided with every KIS beam.

Approvals

All KIS load cells can be ATEX certified for use in explosive atmospheres. Some KIS models are also approved in accordance with OIML.



Applications

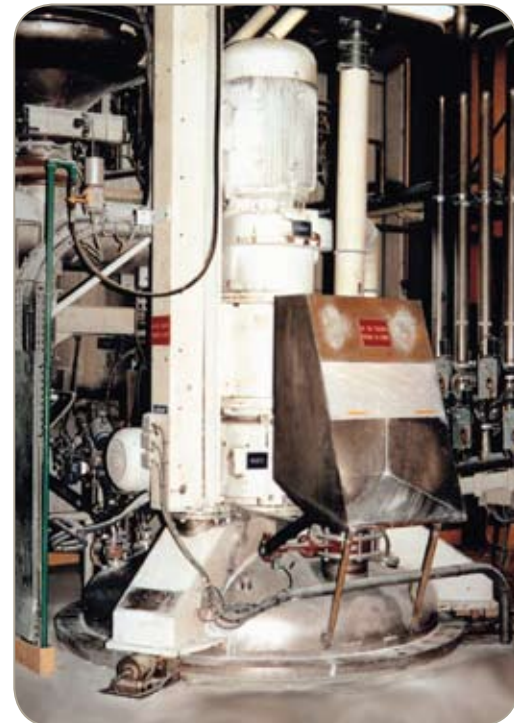


KIS Load Cells Deliver High Performance in All Types of Environments

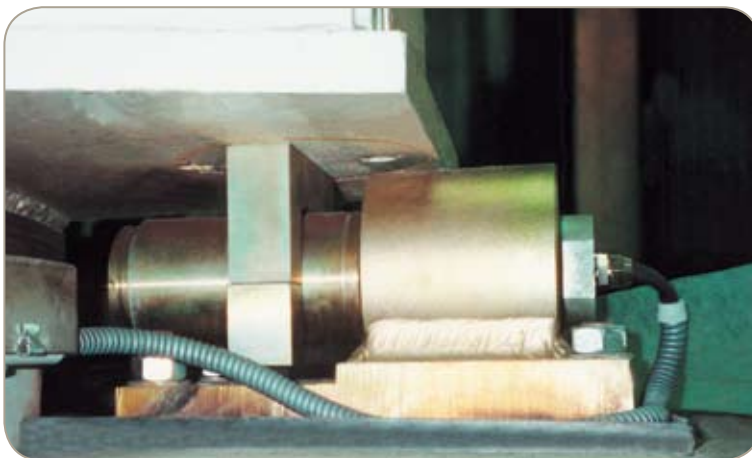
Suitable for a wide variety of applications, easy-to-install KIS load cells are extremely accurate, even when subjected to disturbing forces and severe environmental conditions.



In web tension measurement, the cylindrical shape means that the load cell can be rotated in its mounting so that it measures the resultant force.



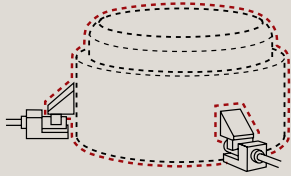
KIS load cells are immune to the vibrations that occur in reactor vessels with rotary stirrers.



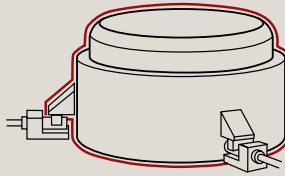
The low profile of the KIS transducer enables platforms to be constructed without changing the overall height.



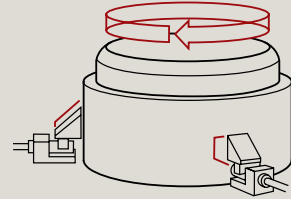
Tank suspended from KIS load cell.



Vibration from agitation



Thermal expansion



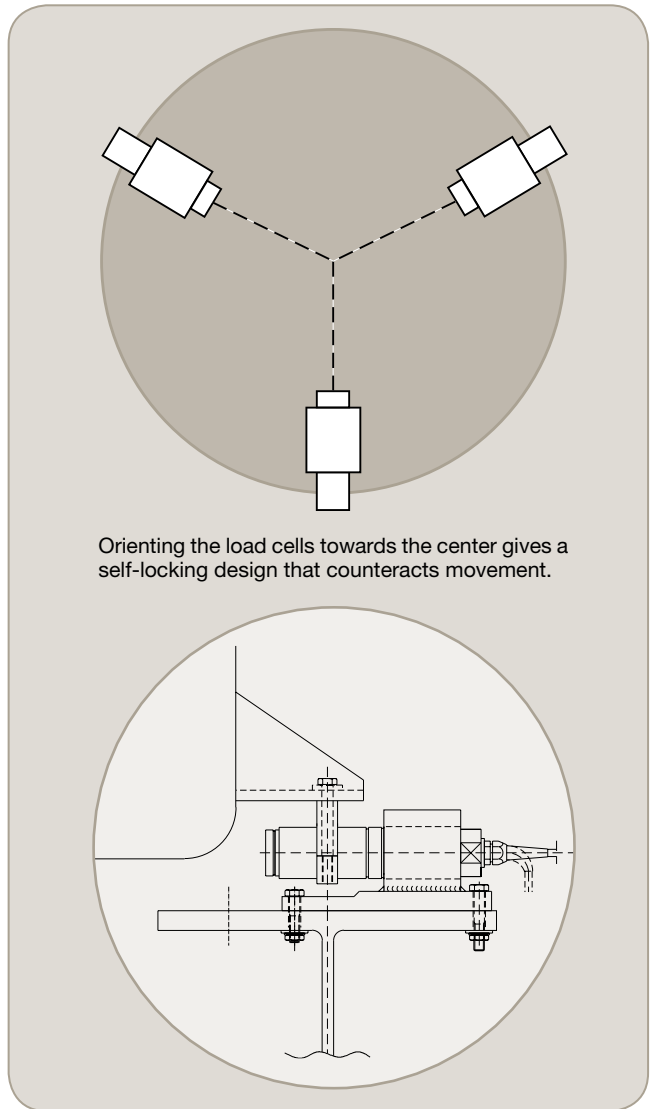
Twisting moment caused by agitator



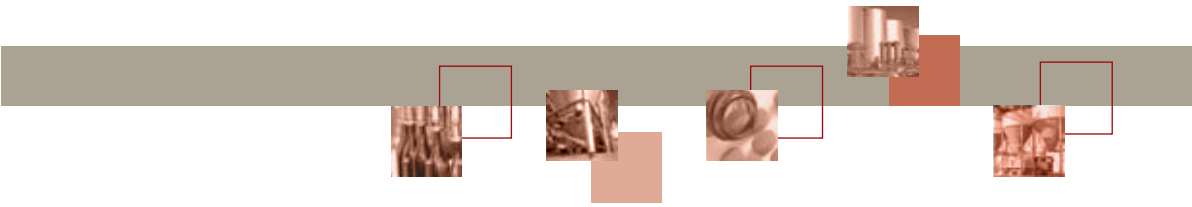
Standard tank weighing.



Force measurement in materials testing.



NOTICE Specifications of the products displayed herein are subject to change without notice. Vishay Intertechnology, Inc., or anyone on its behalf, assumes no responsibility or liability for any errors or inaccuracies. Information contained herein is intended to provide a product description only. No license, express or implied, by estoppel or otherwise, to any intellectual property rights is granted by this document. Except as provided in Vishay's terms and conditions of sale for such products, Vishay assumes no liability whatsoever, and disclaims any express or implied warranty, relating to sale and/or use of Vishay products including liability or warranties relating to fitness for a particular purpose, merchantability, or infringement of any patent, copyright, or other intellectual property right. The products shown herein are not designed for use in medical, life-saving, or life-sustaining applications. Customers using or selling these products for use in such applications do so at their own risk and agree to fully indemnify Vishay for any damages resulting from such improper use or sale.



Unbeatable Features

KIS transducers are shear beams; they measure the strains that arise from the shear forces caused by loading.

Because the KIS shear-beam transducer is inserted in a sleeve, the load can be applied directly over the strain gages, and the result is zero bending force and no effect on the result of the measurement (see diagram). The strain gages in the KIS beam are oriented for optimal measurement of the shear force.

Even when the load point moves, the bending forces have no practical effect on the measurement result. The error is less than 0.005% of the output signal for every millimeter of movement.

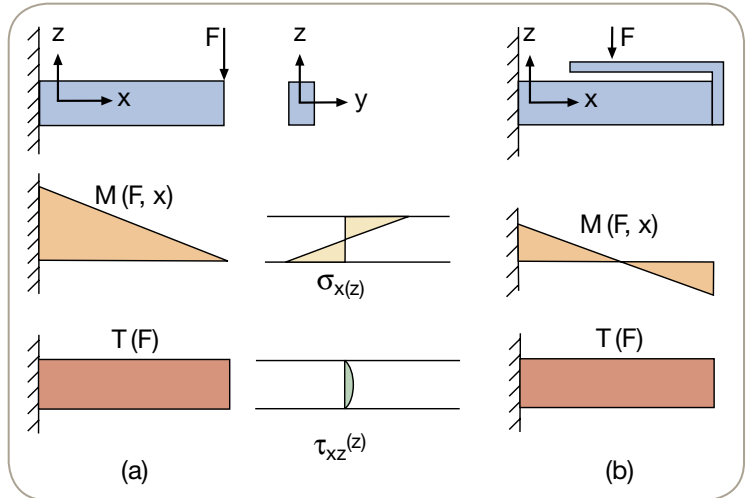
The measurement body is an I-beam, which provides very rigid construction. This means that deflection is insignificant, and there is high lateral rigidity.

The combined result of I-beam construction with strain gages positioned in the web of the beam, means that KIS beams are virtually unaffected by forces such as torque and axial forces, which have a disturbing effect on other load cells.

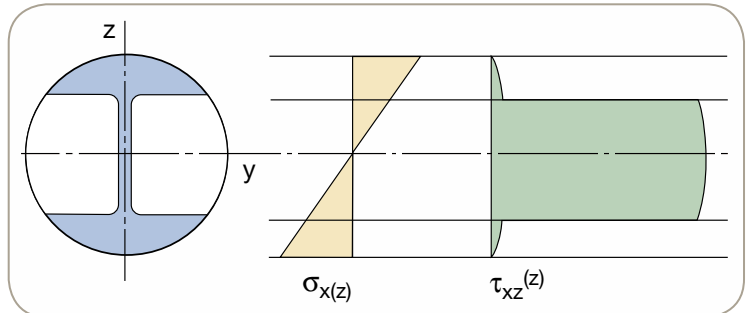
Mounting

The standard KIS mounting is comprised of a bracket that is bolted to the foundation, and a yoke that surrounds the active part of the load cell. The yoke should be placed as close to the recommended load point as possible and tilt guards can be provided if required.

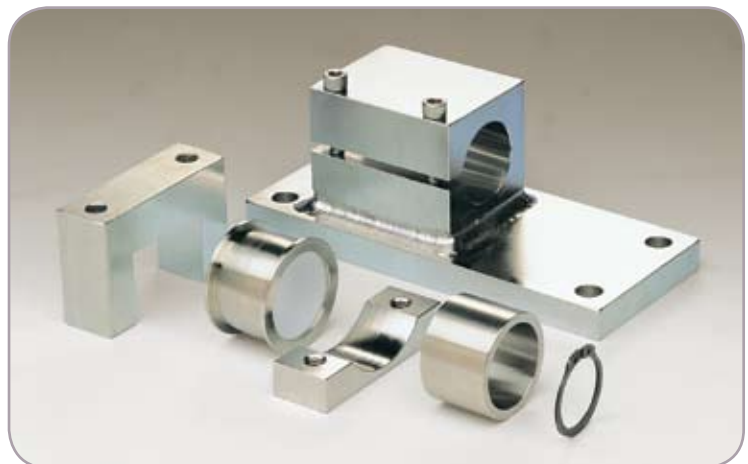
KIS beam mountings can be customized to fit a variety of installations. Where there is risk of the yoke sliding on the load cell, a distance sleeve and circlip are fitted to lock the yoke in place. In applications where the loading point moves frequently due to severe vibration, the recommended arrangement is to place the yoke on a ring surrounding the load cell. Teflon-coated rings are available for the lower measuring ranges.



Distribution of bending moment M , shear force T , normal stress σ and shear stress τ when the beam in example (a) is subjected to a force perpendicular to its free end, and (b) is fitted with an extra beam (for KIS a cylinder) along which the force is allowed to be moved.



Distribution of normal stress σ and shear stress τ in the I-beam under load. The shear stress is greatest when the normal stress is zero. However, there is very little variation in the shear force in the web of the beam.



VISHAY MEASUREMENTS GROUP:

Vishay Micro-Measurements
Vishay Transducers
Vishay Systems—Weighing and Force Measurements



The World's Largest
Manufacturer
of Weighing and Force Measurement Transducers

WORLDWIDE SALES CONTACTS

THE AMERICAS

UNITED STATES

VISHAY SYSTEMS
3 EDGEWATER DRIVE
NORWOOD, MA 02062
UNITED STATES
PH: +1-781-298-2200
FAX: +1-781-762-3988
E-MAIL: VS.USA@VISHAYMG.COM

CANADA

VISHAY SYSTEMS
12 STEINWAY BOULEVARD, UNIT 1
TORONTO, ONTARIO M9W 6M5
CANADA
PH: +1-800-567-6098 (TOLL FREE)
+1-416-251-2554
FAX: +1-416-251-2690
E-MAIL: VS.CAN@VISHAYMG.COM

ASIA

TAIWAN, R.O.C.

VISHAY SYSTEMS*
15 FL, NO. 86, SEC.1 SHINTAI 5TH RD.
SIJHIH CITY, TAIPEI, 22102
TAIWAN, R.O.C.
PH: +886-2-2696-0168
FAX: +886-2-2696-4965
E-MAIL: VS.ROC@VISHAYMG.COM
*ASIA EXCEPT P.R. CHINA

P.R. CHINA

VISHAY SYSTEMS
NO. 5 BINGUAN NAN DAO YOUYI RD.
HEXI DISTRICT
CODE 300061, TIANJIN
P.R. CHINA
PH: +86-22-2835-3503
FAX: +86-22-2835-7261
E-MAIL: VS.PRC@VISHAYMG.COM

EUROPE

UNITED KINGDOM

VISHAY SYSTEMS
AIREDALE HOUSE
CANAL ROAD
BRADFORD BD2 1AG
UNITED KINGDOM
PH: +44-1274-782229
FAX: +44-1274-782230
E-MAIL: VS.UK@VISHAYMG.COM

SWEDEN

VISHAY SYSTEMS
P.O. BOX 423
SE-691 27 KARLSKOGA
SWEDEN
PH: +46-586-63000
FAX: +46-586-63099
E-MAIL: VS.SE@VISHAYMG.COM

GERMANY

VISHAY SYSTEMS
TATSCHENWEG 1
74078 HEILBRONN
GERMANY
PH: +49-7131-39099-0
FAX: +49-7131-39099-229
E-MAIL: VS.DE@VISHAYMG.COM

NORWAY

VISHAY SYSTEMS
BROBEKKVEIEN 80
0582 OSLO
NORWAY
PH: +47-22-88-40-90
FAX: +47-22-88-40-99
E-MAIL: VS.SE@VISHAYMG.COM

FRANCE

VISHAY SYSTEMS
16 RUE FRANCIS VOVELLE
28000 CHARTRES
FRANCE
PH: +33-2-37-33-31-25
FAX: +33-2-37-33-31-29
E-MAIL: VS.FR@VISHAYMG.COM

ISRAEL

VISHAY SYSTEMS
8A HAZORAN STREET
P.O. BOX 8381
NETANYA 42506
ISRAEL
PH: +972-9-863-8888
FAX: +972-9-863-8800
E-MAIL: VS.IL@VISHAYMG.COM

www.vishaymg.com

www.vishay.com